

NOTES:

1. TYPICAL CUSTOMER CONDUCTOR IS No. 10 COPPER NMWU
2. NEUTRAL BUS AND GROUND BUS ARE BONDED VIA CONTROLLER CABINET

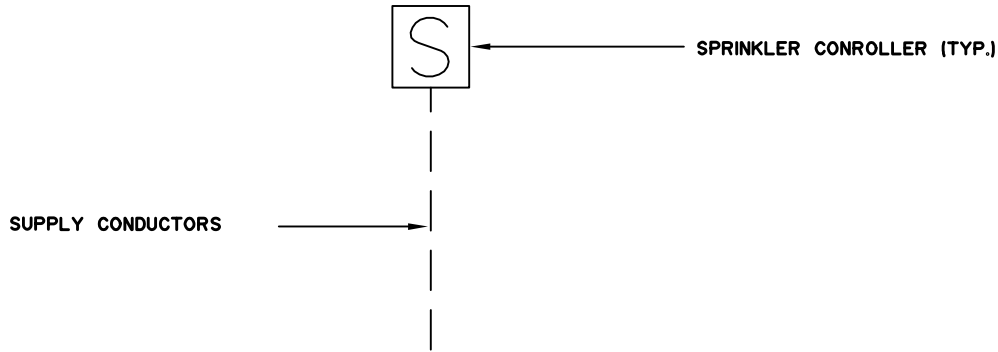
STANDARD DETAILS	
SCALE: N.T.S.	
DATE: DECEMBER, 2015	
STD. DWG NO.	E-001

UNMETERED 120 VOLT
CONNECTION FOR IRRIGATION
CONTROLLER



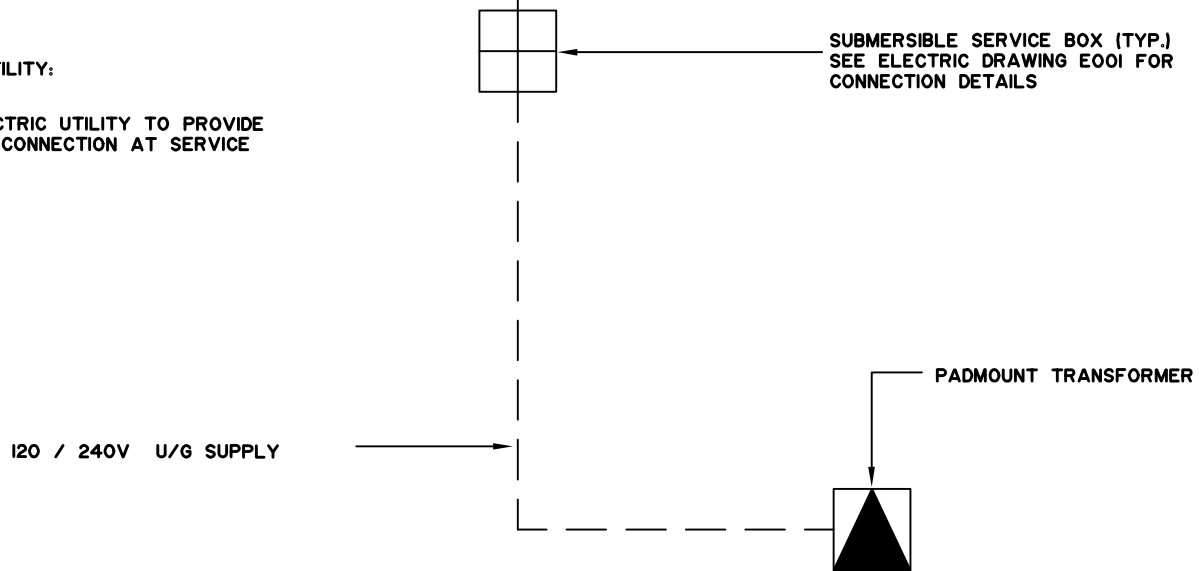
BY CONTRACTOR:

1. CONTRACTOR IS RESPONSIBLE FOR TRENCHING, INSTALLATION OF MAIN SERVICE EQUIPMENT, ELECTRIC SERVICE CABLE, AND CONNECTIONS AT CONTROLLER
2. CONTRACTOR TO CO-ORDINATE INSTALLATIONS AND FINAL CONNECTION AT SERVICE BOX WITH THE ELECTRIC UTILITY
3. SUPPLY CONDUCTORS FROM UTILITY SERVICE BOX TO IRRIGATION CONTROLLER TO BE BURIED 1.0 METER BELOW FINAL GRADE
CONDUCTORS CAN BE DIRECT BURIED IF USING NMW CABLE, OR OTHER TYPE OF CABLE SUITABLE FOR DIRECT BURIAL.



BY UTILITY:

1. ELECTRIC UTILITY TO PROVIDE FINAL CONNECTION AT SERVICE BOX.

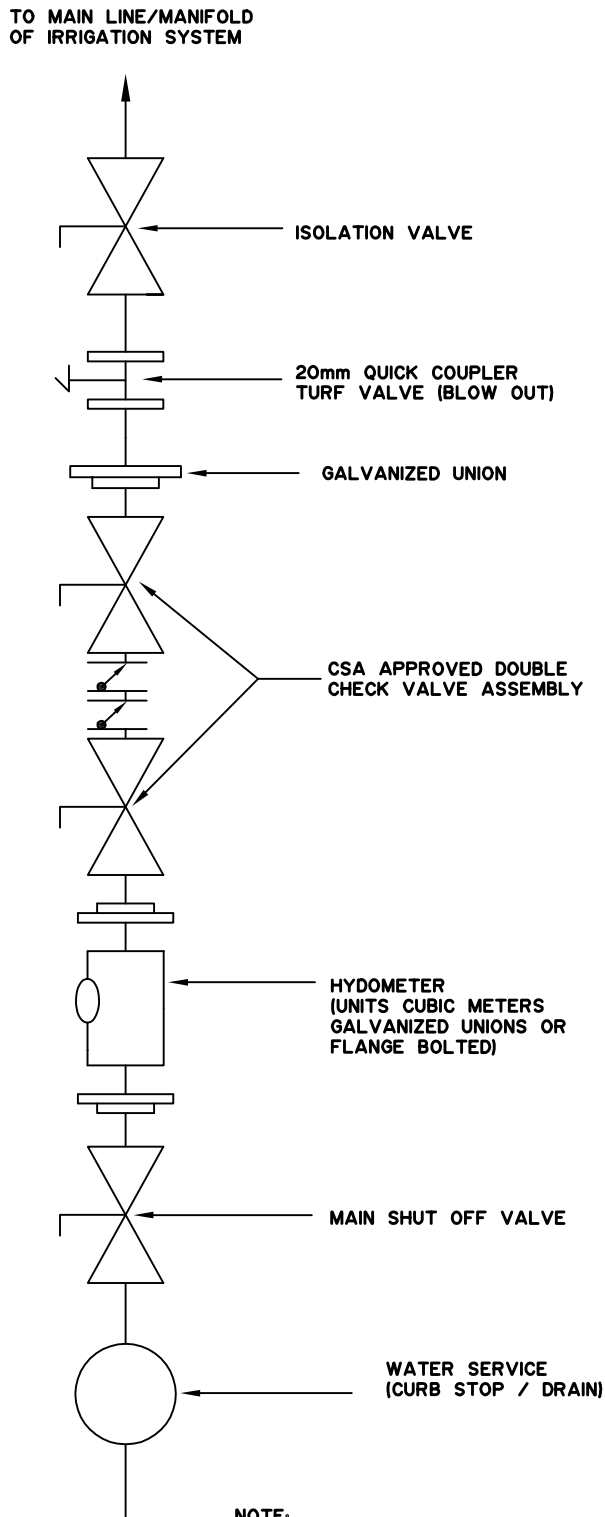


STANDARD DETAILS	
SCALE: N.T.S.	
DATE: DECEMBER, 2015	
STD. DWG NO.	E-002

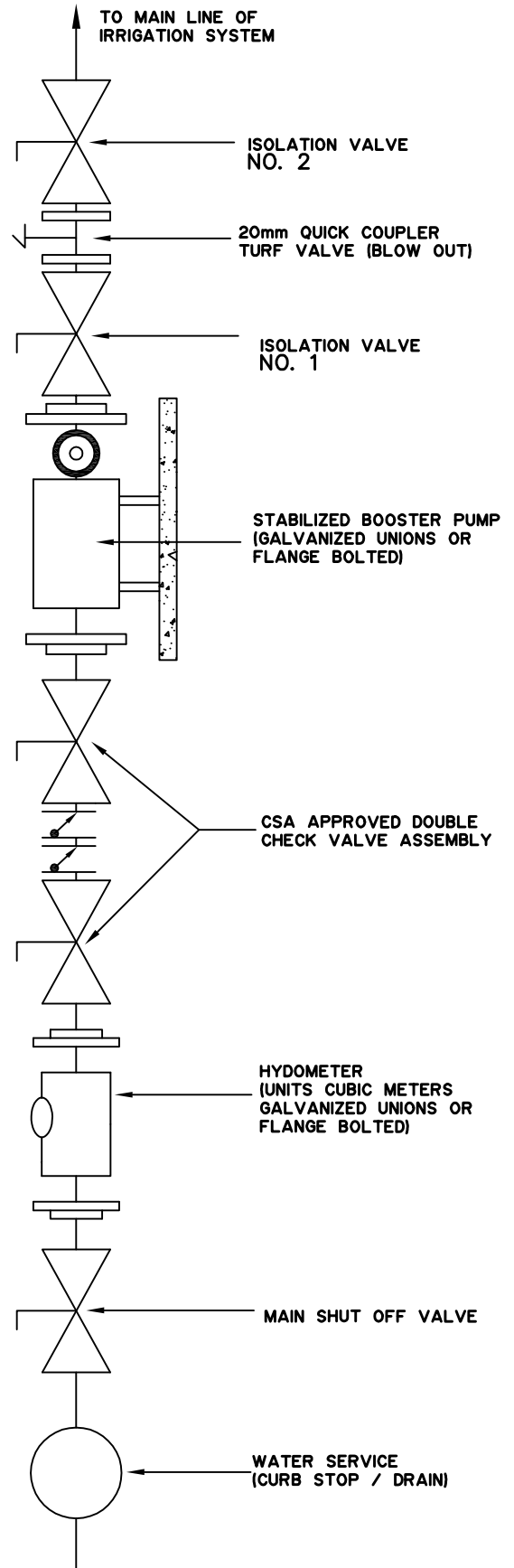
UNMETERED U/G ELECTRIC
SERVICE FOR IRRIGATION
CONTROLLER (TYP.)



ALIGNMENT WITHOUT BOOSTER PUMP



ALIGNMENT WITH BOOSTER PUMP



NOTE:
THE PIPING AND FITTINGS AT THE
POINT OF CONNECTION AT THE
WATER SERVICE TO THE EXIT
POINT SHALL BE GALVANIZED

STANDARD DETAILS

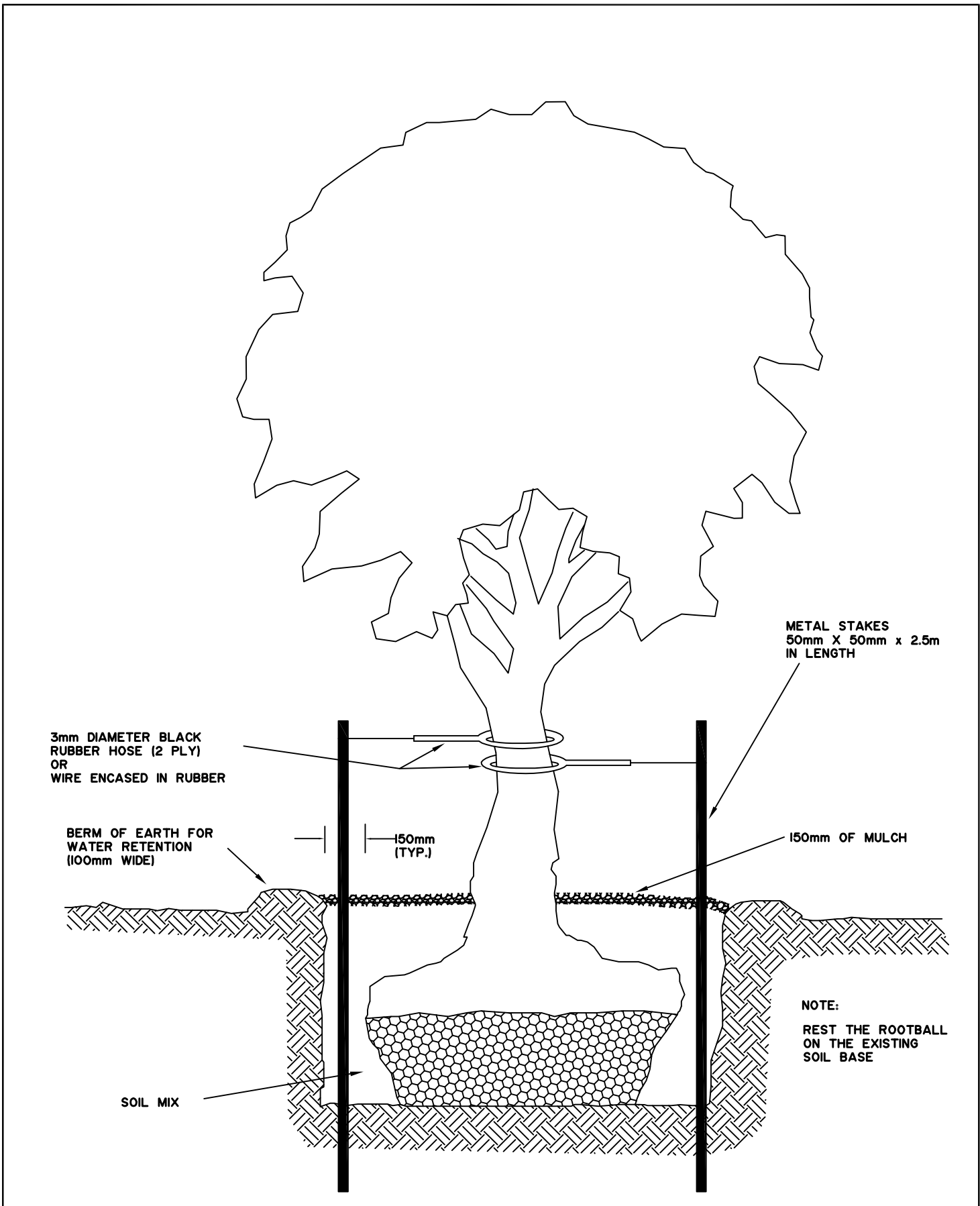
SCALE: N.T.S.

DATE: DECEMBER, 2015

STD. DWG NO. E-003

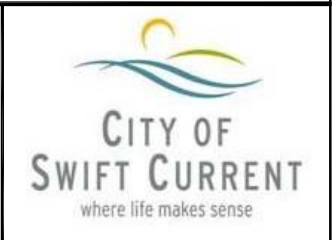
IRRIGATION WATER SERVICE
HARDWARE MATERIAL ALIGNMENT





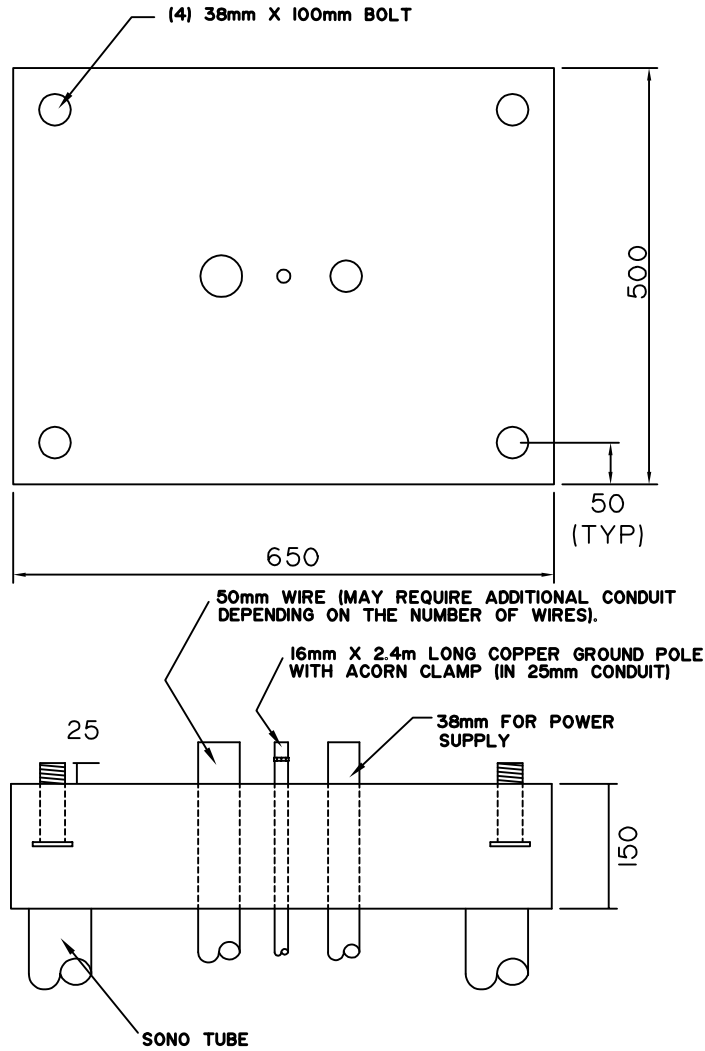
STANDARD DETAILS	
SCALE: N.T.S.	
DATE: DECEMBER, 2015	
STD. DWG NO.	E-004

TREE SUPPORT METHOD USING
TREE STAKES C/W MULCH



NOTES:

1. SIZE OF CABINET
 WIDTH - 450mm
 HEIGHT - 600mm
 DEPTH - 300mm
2. CONSTRUCT WITH 2 - 150mm DIA. SONO TUBES
 600mm IN DEPTH
3. CONCRETE BASE WITH WIRE MESH OR REBAR IN
 CONCRETE. USE "L" SHAPED REBAR TO TIE BASE
 AND SONO TUBES.
4. CABINET TO BE CUT AROUND THE CONDUIT.
5. ALL MEASUREMENTS ARE IN MILLIMETERS.



STANDARD DETAILS		CONCRETE PAD FOR STANDARD IRRIGATION CONTROLLER CABINET	
SCALE: N.T.S.			
DATE: DECEMBER, 2015			
STD. DWG NO.	E-005		

NOTES:

1. SIZE OF CABINET

WIDTH - 600mm

HEIGHT - 600mm

DEPTH - 300mm

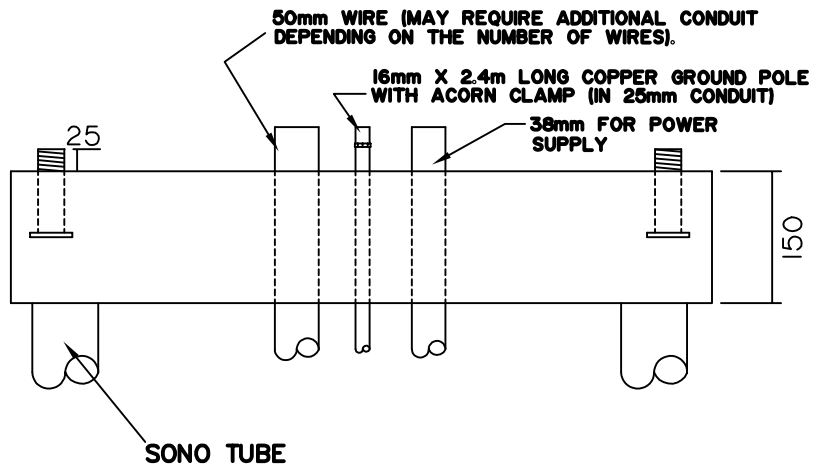
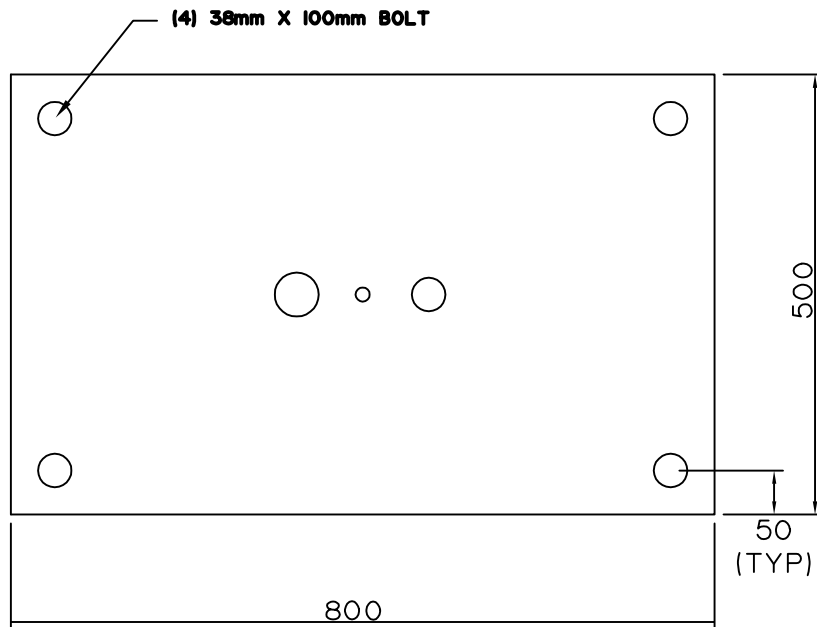
2. CONSTRUCT WITH 2 - 150mm DIA. SONO TUBES

900mm IN DEPTH

3. CONCRETE BASE WITH WIRE MESH OR REBAR IN CONCRETE. USE "L" SHAPED REBAR TO TIE BASE AND SONO TUBES.

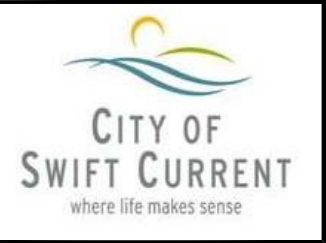
4. CABINET TO BE CUT AROUND THE CONDUIT.

5. ALL MEASUREMENTS ARE IN MILLIMETERS.



STANDARD DETAILS	
SCALE: N.T.S.	
DATE: DECEMBER 2015	
STD. DWG NO.	E-006

CONCRETE PAD FOR DOUBLE SCORPIO IRRIGATION CONTROLLER CABINET



NOTES:

1. SIZE OF CABINET

WIDTH - 900mm

HEIGHT - 1100mm

DEPTH - 400mm

2. ALL BASES HAVE 100mm OVERHANG

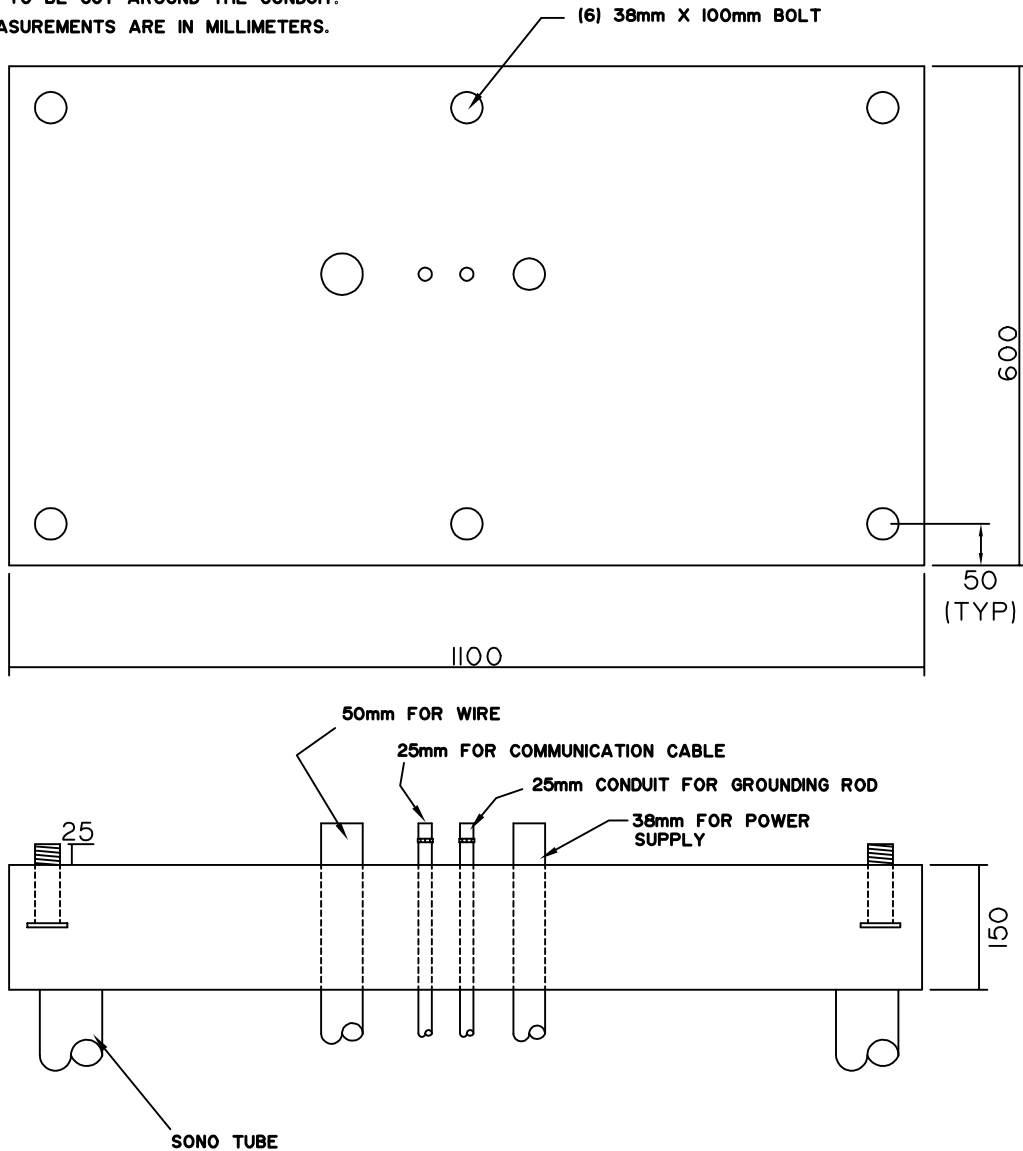
3. CONSTRUCT WITH 2 - 200mm DIA. SONO TUBES

900mm IN DEPTH

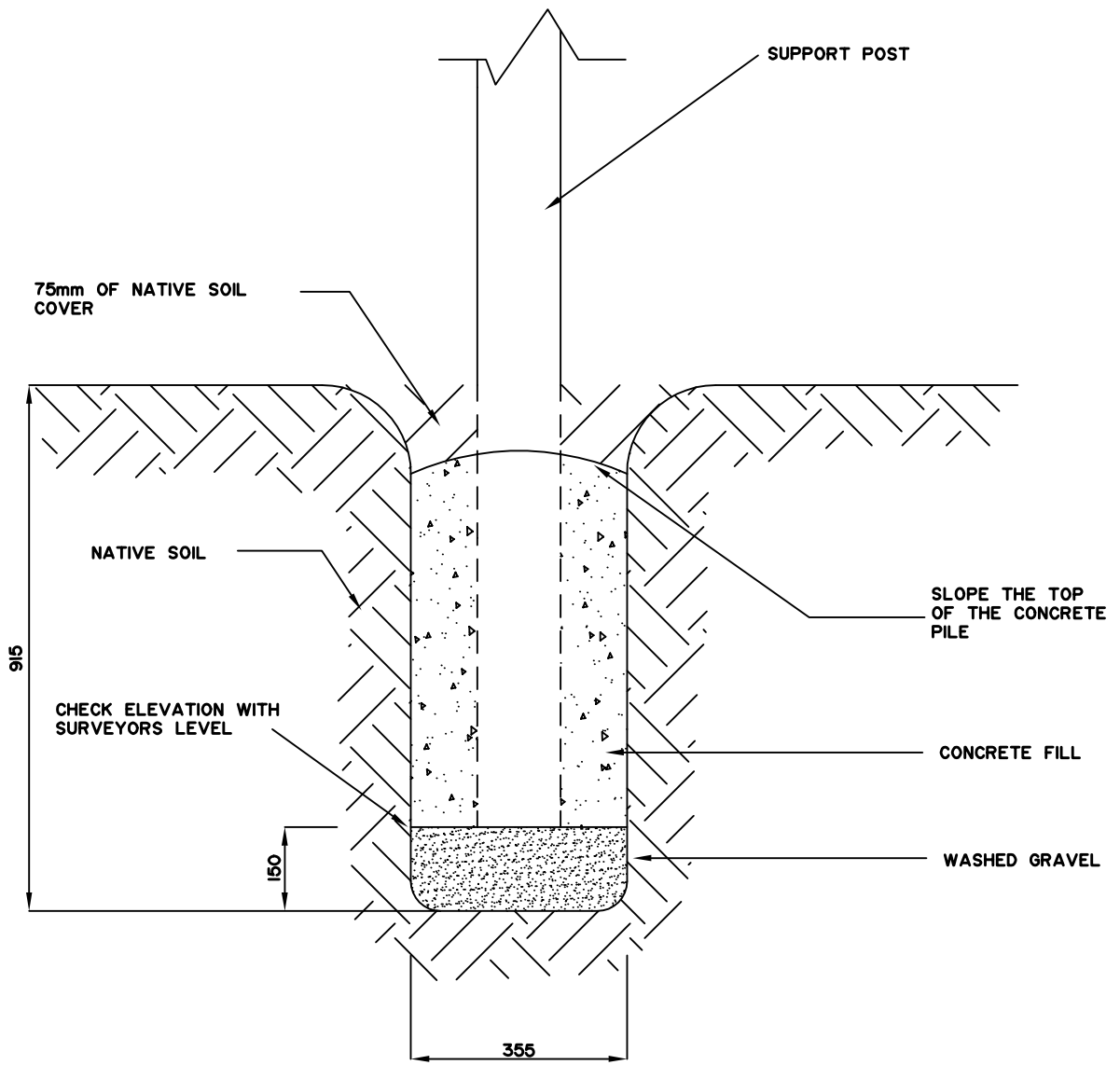
4. CONCRETE BASE WITH WIRE MESH OR REBAR IN CONCRETE. USE "L" SHAPED REBAR TO TIE BASE AND SONO TUBES.

5. CABINET TO BE CUT AROUND THE CONDUIT.

6. ALL MEASUREMENTS ARE IN MILLIMETERS.



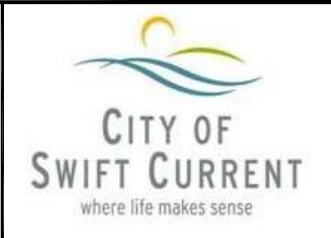
STANDARD DETAILS		<p>CONCRETE PAD FOR IRRINET IRRIGATION CONTROLLER CABINET</p>	
SCALE: N.T.S.			
DATE: DECEMBER, 2015			
STD. DWG NO.	E-007		

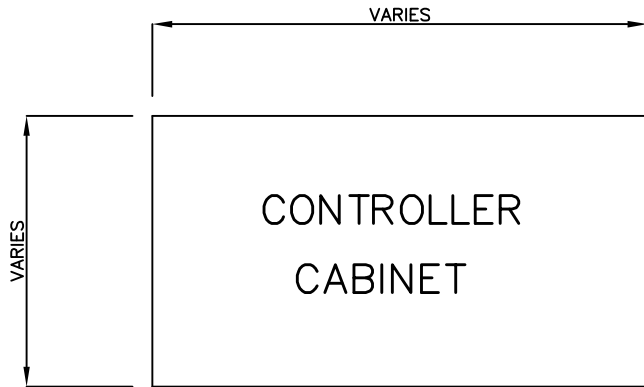


NOTE: ALL MEASUREMENTS ARE IN MILLIMETERS

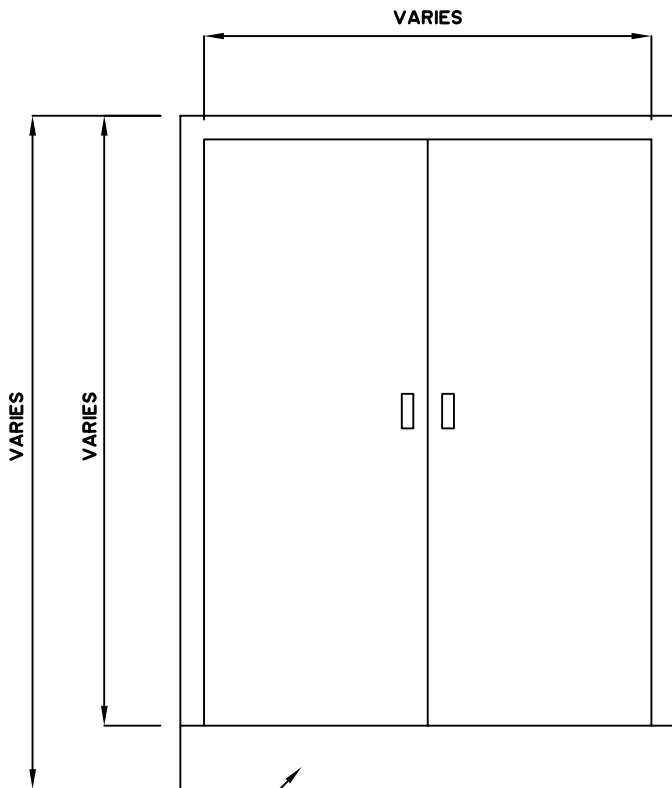
STANDARD DETAILS	
SCALE: N.T.S.	
DATE: DECEMBER, 2015	
STD. DWG NO.	E-008

CONCRETE ENCASED SUPPORT POST (MINIMUM INSTALLATION GUIDELINES)





TOP VIEW



FRONT VIEW

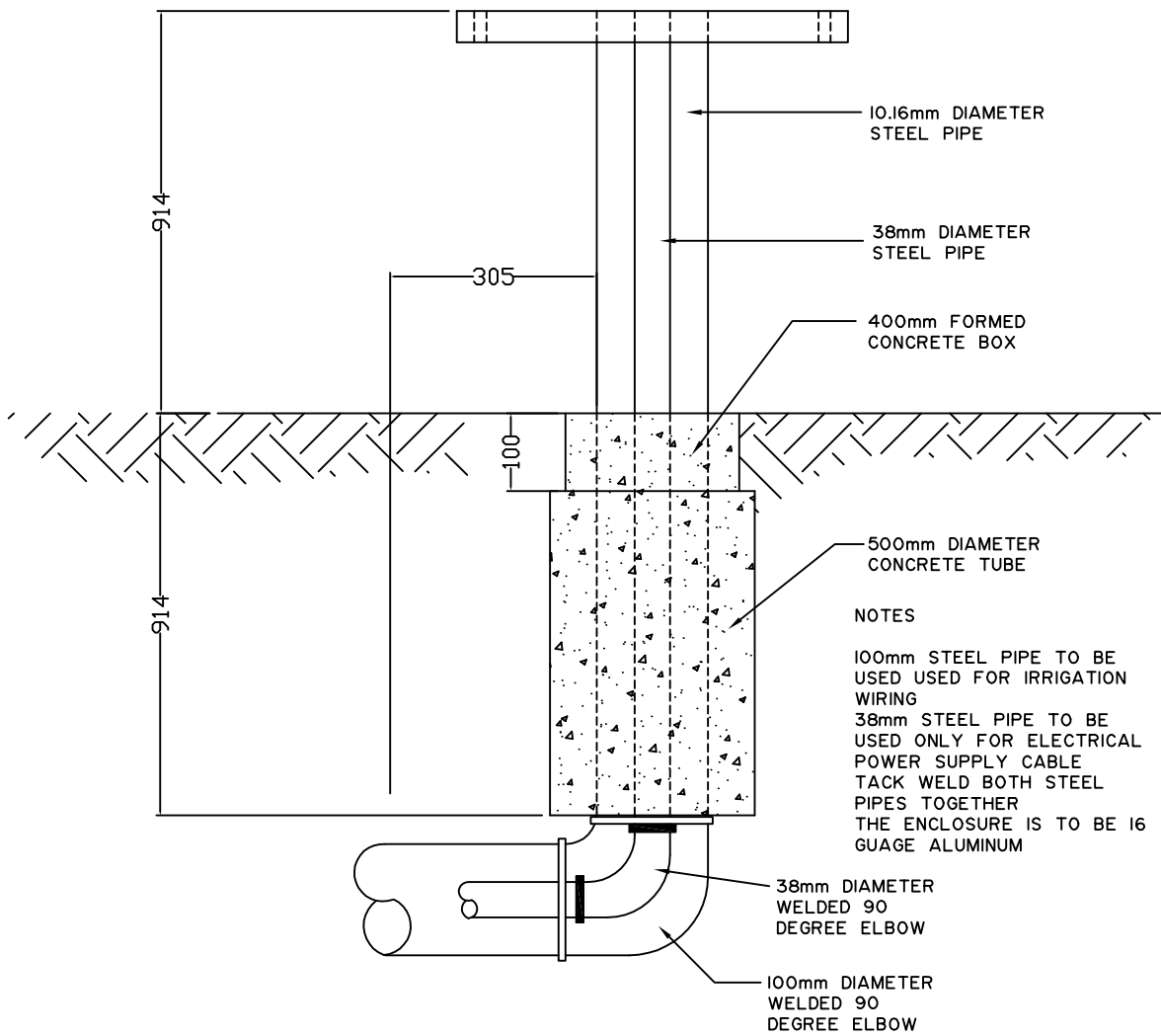
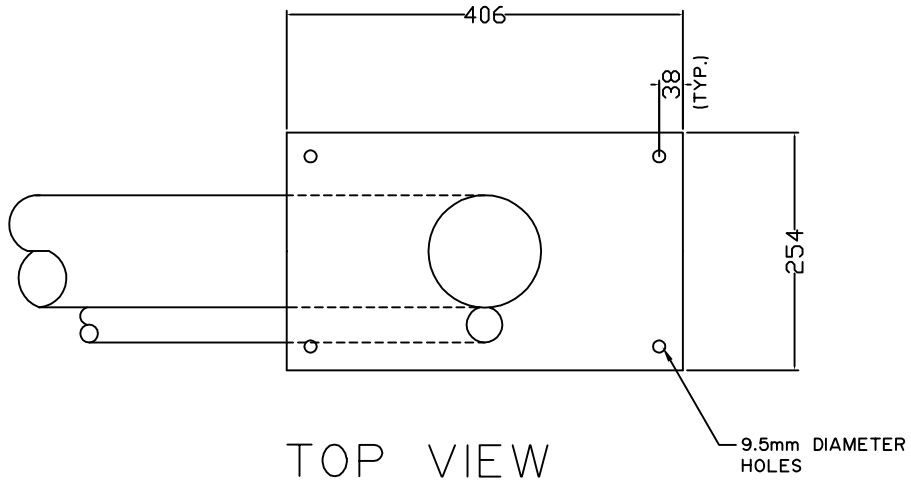
NOTES

1. EXTERIOR INSTALLATIONS:
16 GAUGE STAINLESS STEEL
2. CABINET SHALL BE FITTED
WITH DOUBLE DOORS MOUNTED
ON STAINLESS STEEL PIANO
HINGES
3. MECHANISM MOUNTED WITH RIVETS
ON BOTH DOORS, CAPABLE OF
SECURING EACH DOOR INDIVIDUALLY
IN THE CLOSED POSITION
4. CABINET TO BE WEATHERPROOF
AND LOCKABLE
5. CLOSURE BRACKETS, HINGE ATTACHMENTS
AND PLYWOOD MOUNTS ARE TO BE
WELDED FROM THE INSIDE
6. EXTERIOR OF CABINET SHALL BE
SMOOTH AND ROUNDED WITH NO
PROTRUSIONS OR SHARP EDGES
EVIDENT
7. ANY POINT OF ENTRY INTO CABINET
WALL SHALL BE SEALED WITH A
WATERPROOF SEALER
8. ALL MEASUREMENTS ARE IN MILLIMETERS

THREE CABINET SIZES

- (1) IRRINET
 - 900 WIDE
 - 1100 HIGH
 - 400 DEEP
- (2) DOUBLE SCORPIO
 - 600 WIDE
 - 600 HIGH
 - 300 DEEP
- (3) SINGLE SCORPIO OR STANDARD
 - 450 WIDE
 - 600 HIGH
 - 300 DEEP

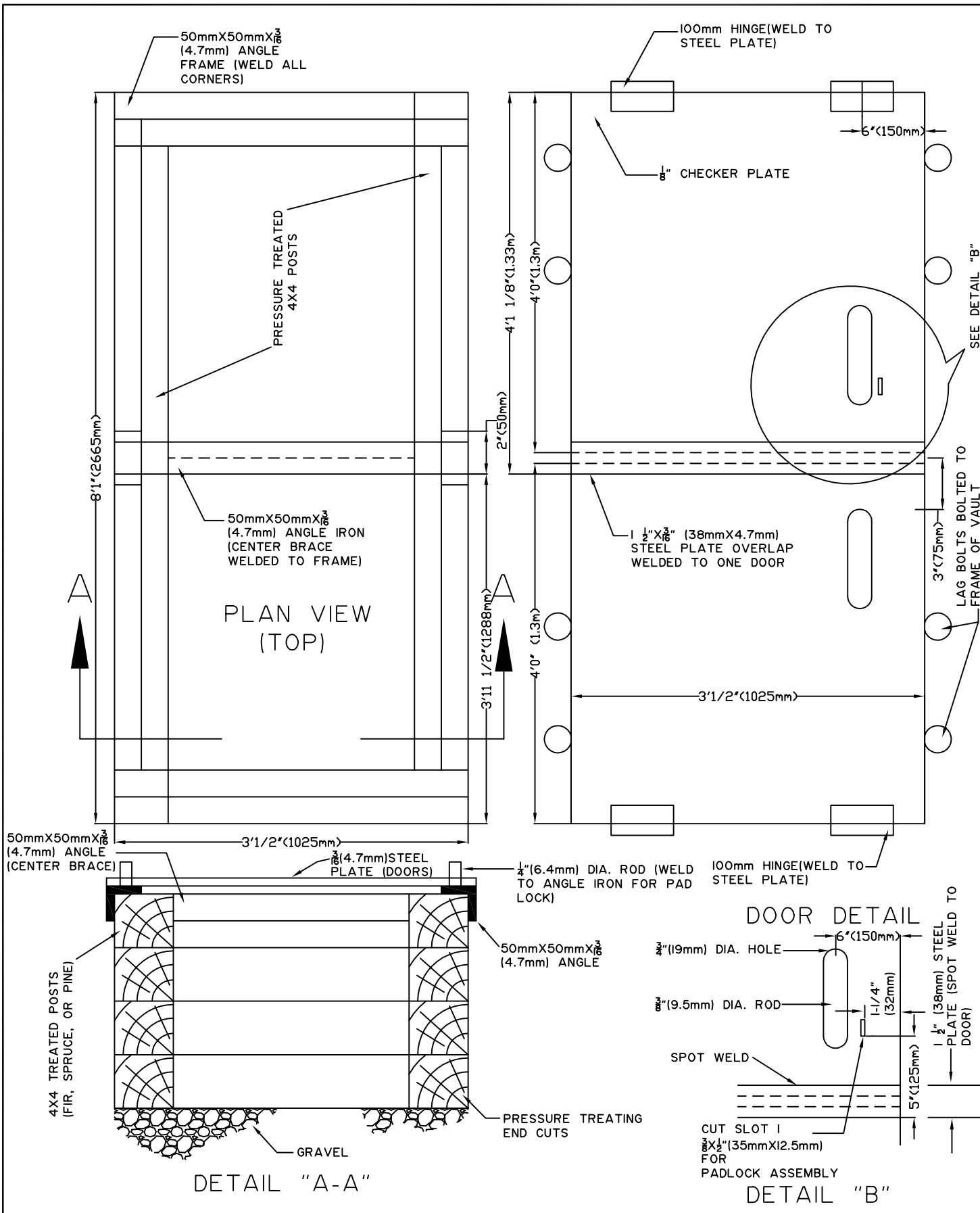
STANDARD DETAILS		IRRIGATION CONTROLLER CABINET	
SCALE: N.T.S.			
DATE: DECEMBER, 2015			
STD. DWG NO.	E-009		



STANDARD DETAILS	
SCALE: N.T.S.	
DATE: DECEMBER, 2015	
STD. DWG NO.	E-010

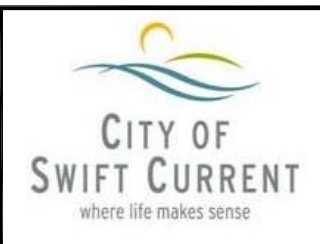
SCORPIO CABINET PEDESTAL

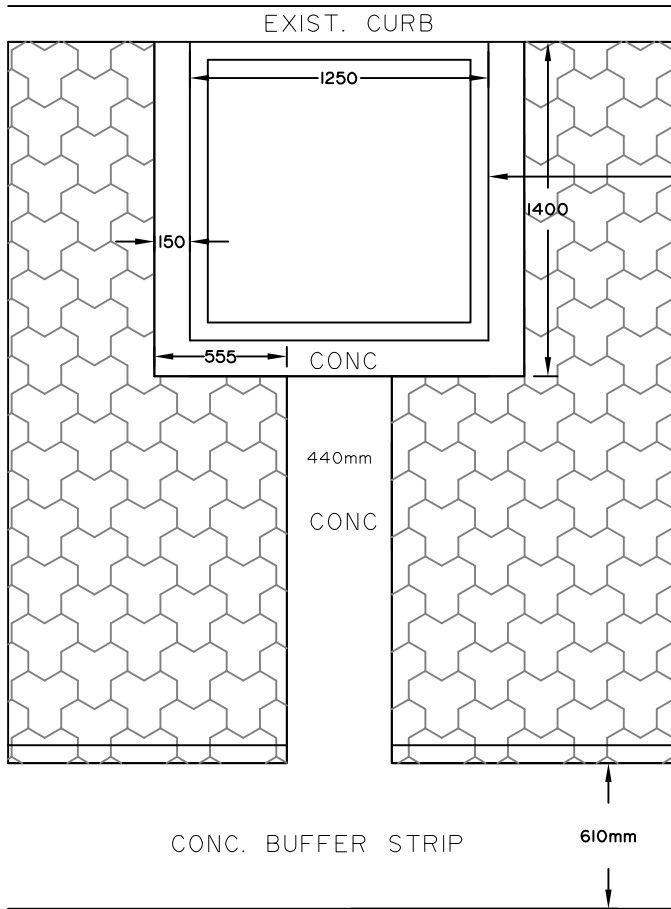




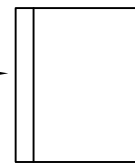
STANDARD DETAILS	
SCALE: N.T.S.	
DATE: DECEMBER, 2015	
STD. DWG NO.	E-011

VAULT DETAIL FOR IRRIGATION VALVE SYSTEM

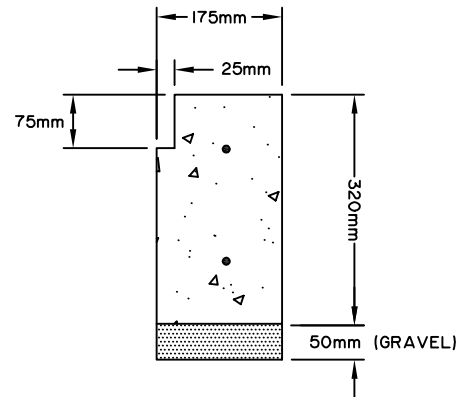




CONCRETE LIP



TOP VIEW



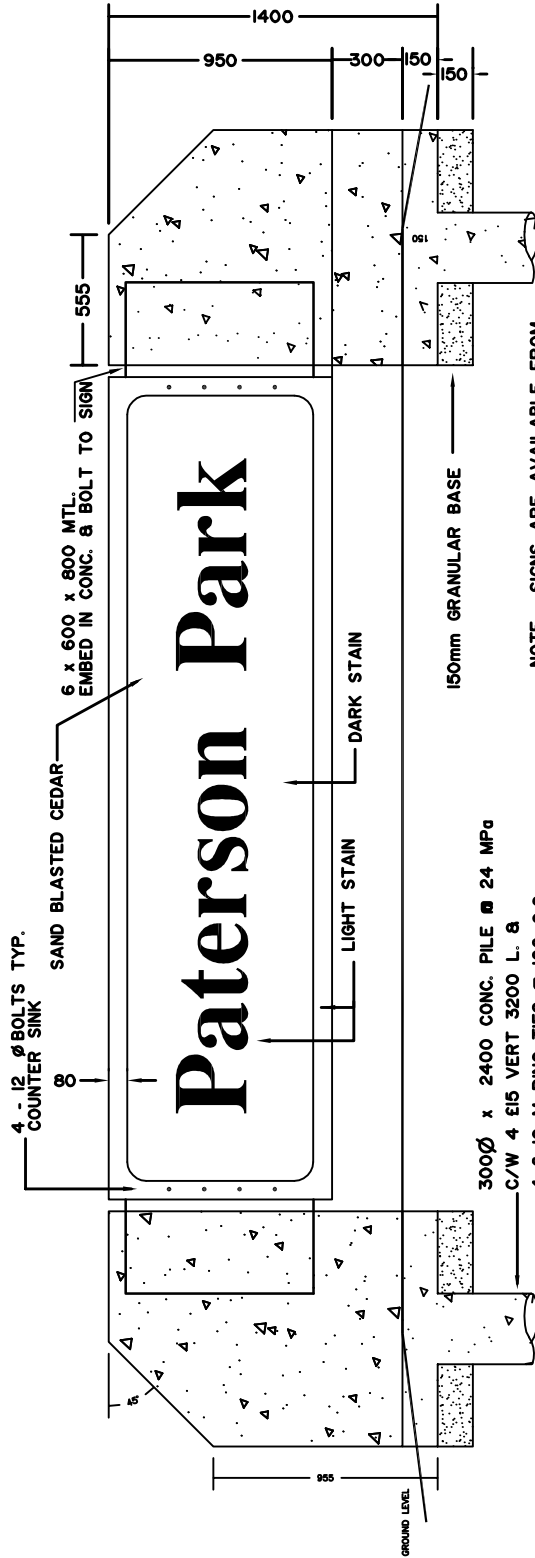
LIP-EDGE DETAIL

STANDARD DETAILS	
SCALE: N.T.S.	
DATE: DECEMBER, 2015	
STD. DWG NO.	E-100

TREE STAND

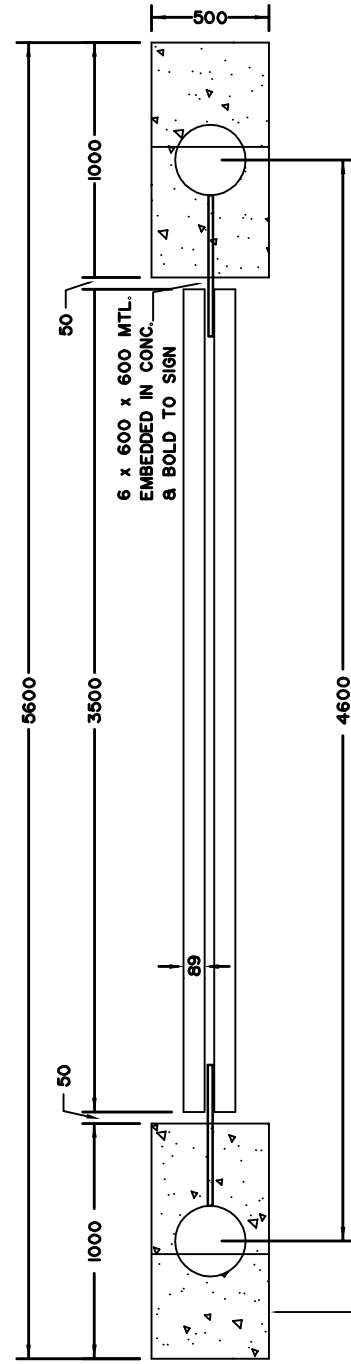


LETTERING STYLE: ROMIC BOLD (HT. OF UPPER CASE TO BE 350)



NOTE: SIGNS ARE AVAILABLE FROM
 PLS SIGN & GRAPHIC LTD. 1865 PARK
 STREET, REGINA, PH. 352-2211 FOR
 SIGN FACE ONLY.

3000 Ø x 2400 CONC. PILE 24 MPa
 C/W 4 E15 VERT 3200 L. &
 4 E 10 M RING TIES 100 O.C.
 M/T/O PILE REMAINDER 400 O.C.



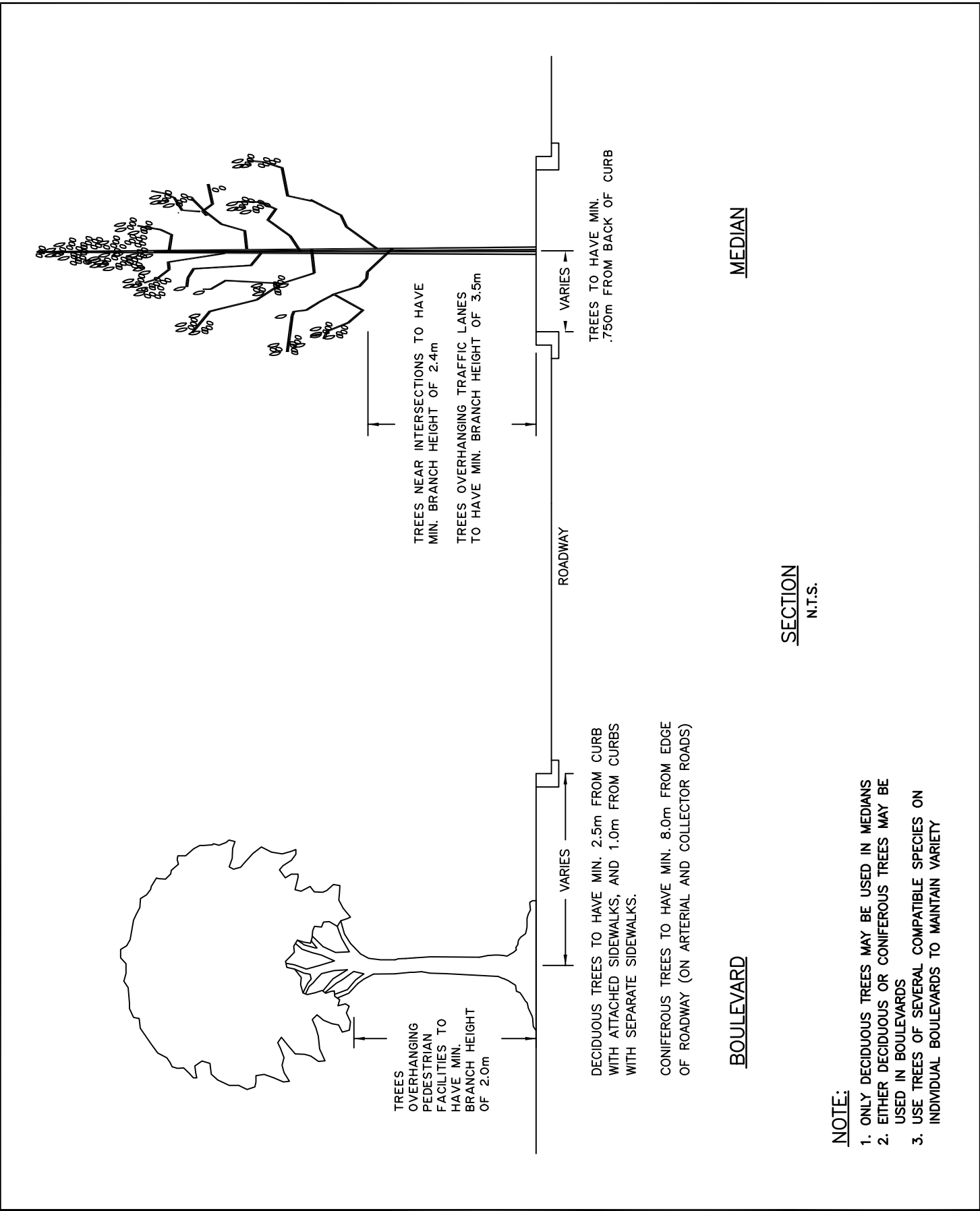
NOTE: PAINT EXPOSED PORTIONS
 OF MTL SUPPORTS W/BROWN ENAMEL
 PAINT.

EXPOSED AGG.
 CONCRETE ENDS. TYPE 10 PORTLAND
 CEMENT, 25MPa, 5% - 7% AIR
 ENTRAINED.

TITLE: STANDARD DETAILS	
SCALE: N.T.S.	
DATE: DECEMBER, 2015	
STD. DWG NO.	E-101

WOOD SIGN



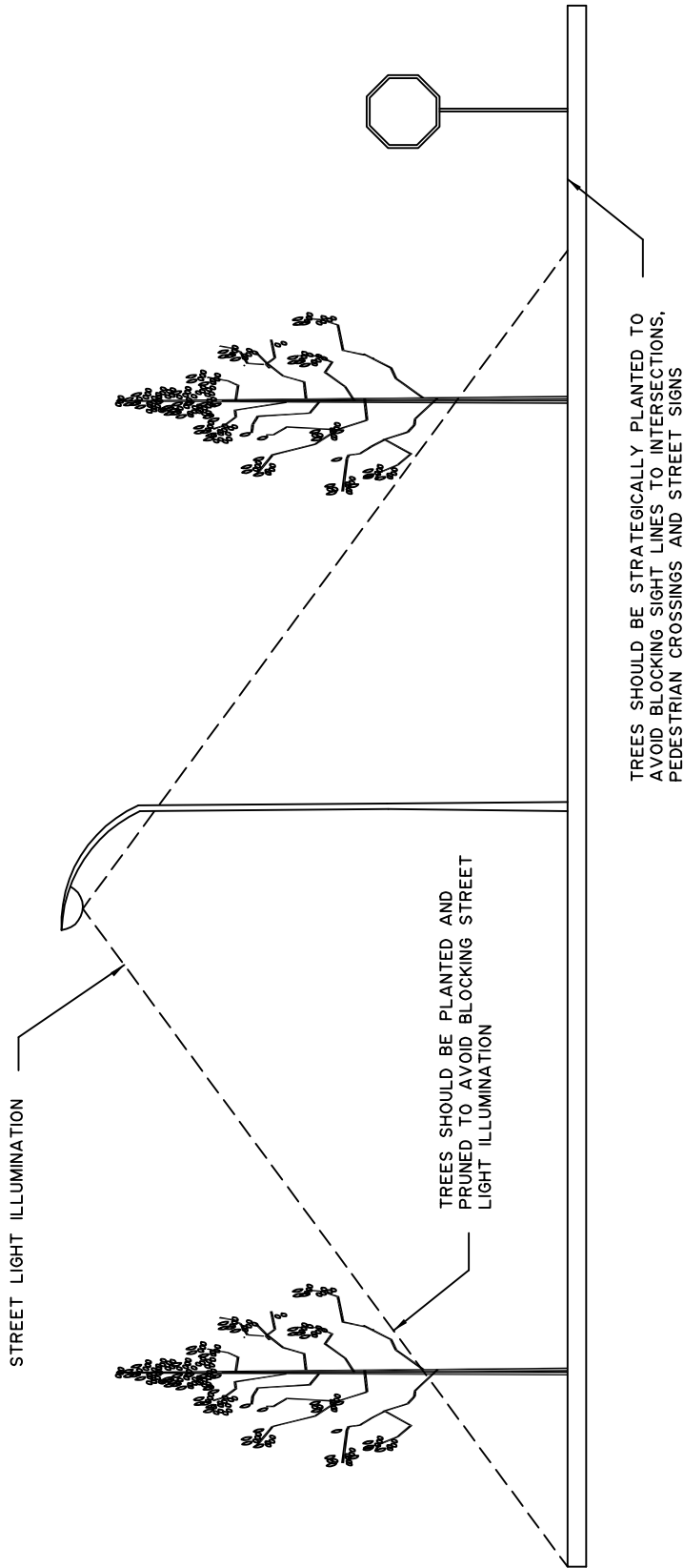


TITLE: STANDARD DETAILS	
SCALE: N.T.S.	
DATE: DECEMBER, 2015	
STD. DWG NO.	E-200

LANDSCAPING – BOULEVARDS
AND MEDIANS



- NOTE:**
1. ONLY DECIDUOUS TREES MAY BE USED IN MEDIANS
 2. EITHER DECIDUOUS OR CONIFEROUS TREES MAY BE USED IN BOULEVARDS
 3. USE TREES OF SEVERAL COMPATIBLE SPECIES ON INDIVIDUAL BOULEVARDS TO MAINTAIN VARIETY



PROFILE
N.T.S.

TITLE:
STANDARD DETAILS

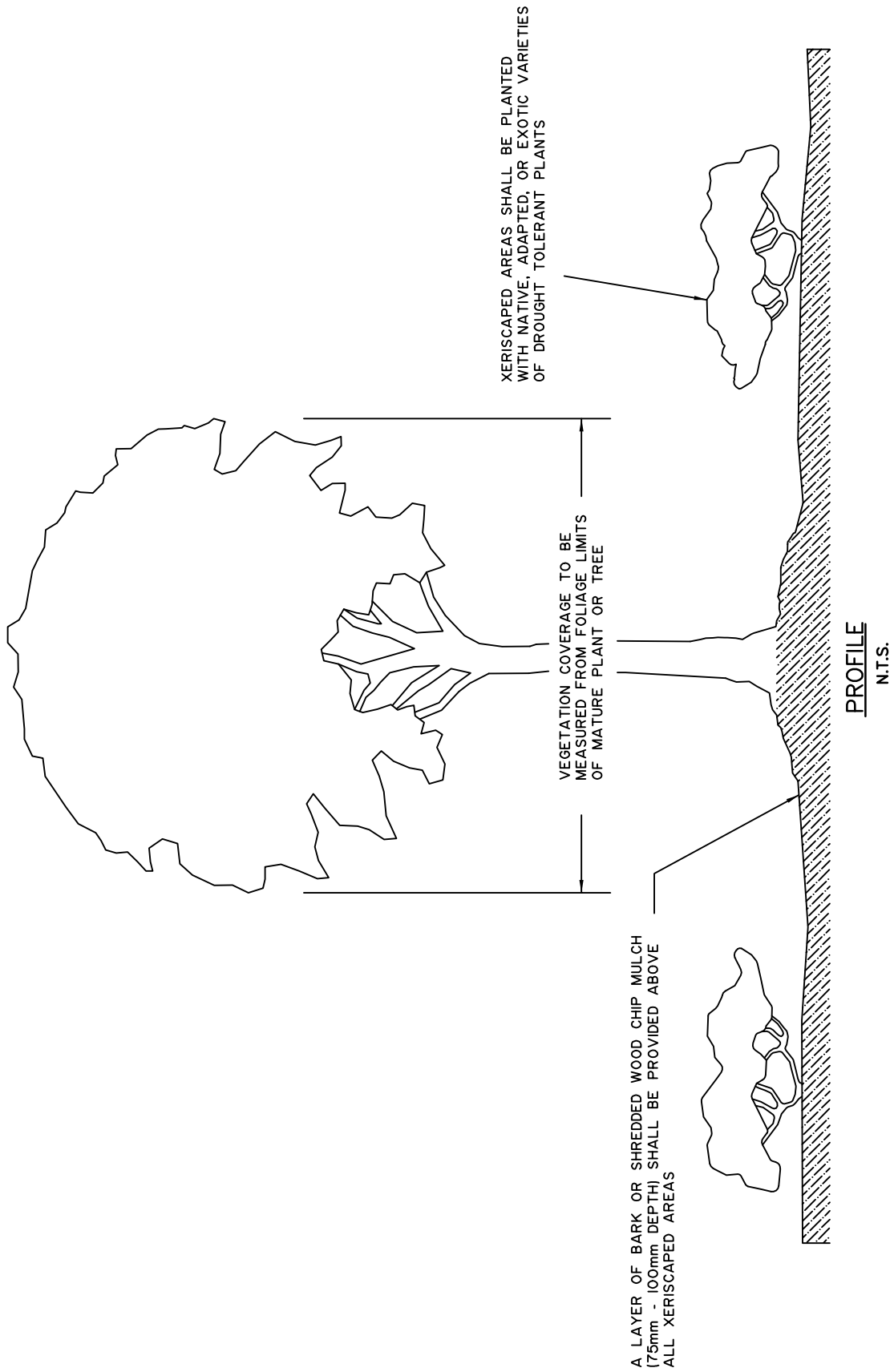
SCALE: N.T.S.

DATE: DECEMBER, 2015

STD. DWG NO. E-201

LANDSCAPING – TREES,
LIGHTING, AND SIGHT LINES





NOTE:
 1. A MINIMUM OF 75% OF XERISCAPED AREA SHALL BE COVERED BY DROUGHT TOLERANT PLANTS AT MATURE SIZE

TITLE: STANDARD DETAILS	
SCALE: N.T.S.	
DATE: DECEMBER, 2015	
STD. DWG NO.	E-202

XERISCAPING – VEGETATION
 COVERAGE

